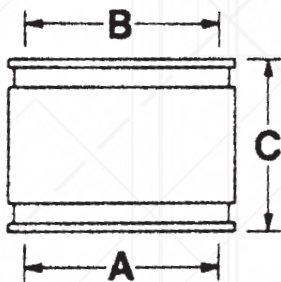


Indiana Seal Coupling Chart

101 Clay to Clay

| Part No. | Pipe Size | A | B | C |
|----------|-----------|-------|-------|------|
| *101-44 | 4x4 | 5.30 | 5.30 | 4.00 |
| *101-54 | 5x4 | 6.40 | 5.30 | 6.25 |
| 101-55 | 5x5 | 6.40 | 6.40 | 6.00 |
| 101-64 | 6x4 | 7.50 | 5.30 | 5.75 |
| 101-64EC | 6x4 | 7.50 | 5.30 | 6.00 |
| 101-65 | 6x5 | 7.50 | 6.40 | 5.75 |
| 101-66 | 6x6 | 7.50 | 7.50 | 5.88 |
| 101-66W | 6x6 | 7.80 | 7.80 | 6.00 |
| *101-84 | 8x4 | 9.75 | 5.30 | 5.88 |
| *101-85 | 8x5 | 9.75 | 6.40 | 5.63 |
| 101-86 | 8x6 | 9.75 | 7.50 | 5.75 |
| 101-88 | 8x8 | 9.75 | 9.75 | 5.88 |
| 101-88W | 8x8 | 10.25 | 10.25 | 6.12 |
| *101-104 | 10x4 | 11.95 | 5.30 | 6.50 |
| *101-106 | 10x6 | 11.95 | 7.50 | 6.50 |
| *101-108 | 10x8 | 11.95 | 9.75 | 6.63 |
| 101-1010 | 10x10 | 11.95 | 11.95 | 6.00 |
| *101-128 | 12x8 | 14.50 | 9.75 | 6.25 |
| 101-1210 | 12x10 | 15.30 | 12.60 | 6.50 |
| 101-1212 | 12x12 | 14.50 | 14.50 | 6.38 |
| 101-1515 | 15x15 | 18.25 | 18.25 | 6.63 |
| 101-1818 | 18x18 | 21.50 | 21.50 | 8.63 |
| 101-2121 | 21x21 | 25.75 | 25.75 | 9.00 |
| 101-2424 | 24x24 | 29.00 | 29.00 | 9.00 |
| 101-2727 | 27x27 | 32.10 | 32.10 | 9.00 |
| 101-3030 | 30x30 | 36.00 | 36.00 | 9.00 |

*Supplied with reducer
W=Western Clay



*Supplied with reducer
W=Western Clay
EC=Eccentric
L=Larger OD
S=Smaller OD

- Couplings are sized to pipe types indicated but will connect any two pipes within $\pm 5\%$ OD range
- With maximum of 0.5" OD change in either direction
- All dimensions identified in inches
- Other sizes and material transitions available upon request

102 Clay (A) to Cast Iron or Plastic (B)

| Part No. | Pipe Size | A | B | C |
|------------|-----------|-------|-------|------|
| 102-43 | 4x3 | 5.30 | 3.40 | 4.00 |
| 102-44 | 4x4 | 5.30 | 4.40 | 4.00 |
| 102-46 | 4x6 | 5.30 | 6.40 | 5.88 |
| *102-48 | 4x8 | 5.30 | 8.55 | 5.88 |
| *102-48EC | 4x8 | 5.30 | 8.55 | 5.75 |
| *102-53 | 5x3 | 6.40 | 3.40 | 6.00 |
| *102-54 | 5x4 | 6.40 | 4.40 | 5.63 |
| *102-55 | 5x5 | 6.40 | 5.50 | 4.75 |
| *102-56 | 5x6 | 6.40 | 6.40 | 6.00 |
| *102-63 | 6x3 | 7.50 | 3.40 | 5.80 |
| 102-64 | 6x4 | 7.50 | 4.40 | 5.50 |
| 102-64EC | 6x4 | 7.50 | 4.40 | 6.09 |
| 102-65 | 6x5 | 7.50 | 5.50 | 5.75 |
| 102-66 | 6x6 | 7.50 | 6.40 | 5.75 |
| 102-66W | 6x6 | 7.80 | 6.40 | 5.88 |
| *102-66ECP | 6x6 | 7.50 | 6.28 | 6.13 |
| *102-68 | 6x8 | 7.50 | 8.55 | 6.00 |
| *102-84 | 8x4 | 9.75 | 4.40 | 5.88 |
| 102-86 | 8x6 | 9.75 | 6.40 | 5.63 |
| *102-86EC | 8x6 | 9.75 | 6.40 | 6.13 |
| 102-88 | 8x8 | 9.75 | 8.55 | 5.75 |
| 102-88W | 8x8 | 10.25 | 8.55 | 5.87 |
| *102-810 | 8x10 | 10.60 | 9.75 | 5.88 |
| *102-104 | 10x4 | 11.95 | 4.40 | 6.25 |
| *102-106 | 10x6 | 11.95 | 6.40 | 6.50 |
| 102-108 | 10x8 | 11.95 | 8.55 | 6.25 |
| 102-1010 | 10x10 | 11.95 | 10.60 | 6.38 |
| *102-128 | 12x8 | 14.50 | 8.55 | 6.25 |
| 102-1210 | 12x10 | 14.50 | 10.60 | 6.00 |
| 102-1212 | 12x12 | 14.50 | 12.60 | 6.30 |
| *102-158 | 15x8 | 18.25 | 8.55 | 7.50 |
| 102-1512 | 15x12 | 18.25 | 12.60 | 6.50 |
| 102-1515 | 15x15 | 18.25 | 15.30 | 7.00 |
| *102-1812 | 18x12 | 21.50 | 12.60 | 9.00 |
| 102-1815 | 18x15 | 21.50 | 15.30 | 9.00 |
| 102-1818 | 18x18 | 21.50 | 18.70 | 9.00 |
| 102-2121 | 21x21 | 25.25 | 22.05 | 8.38 |
| 102-2424 | 24x24 | 28.50 | 24.80 | 8.12 |
| 102-2727 | 27x27 | 32.50 | 28.00 | 8.50 |
| 102-3030 | 30x30 | 36.00 | 32.00 | 9.15 |

*Supplied with reducer
W=Western Clay
EC=Eccentric
ECP=Eccentric PSM

103 Clay (A) to Asbestos Cement or Ductile Iron (B)

| Part No. | Pipe Size | A | B | C |
|----------|-----------|-------|-------|------|
| 103-44 | 4x4 | 5.30 | 4.75 | 3.75 |
| *103-46 | 4x6 | 5.30 | 7.00 | 6.25 |
| 103-54 | 5x4 | 6.40 | 4.75 | 6.50 |
| 103-55 | 5x5 | 6.40 | 5.90 | 4.88 |
| *103-56 | 5x6 | 6.40 | 7.00 | 6.00 |
| 103-64 | 6x4 | 7.50 | 4.75 | 5.56 |
| 103-65 | 6x5 | 7.50 | 5.90 | 5.88 |
| 103-66 | 6x6 | 7.50 | 7.00 | 5.88 |
| *103-68 | 6x8 | 7.50 | 9.12 | 6.00 |
| 103-86 | 8x6 | 9.75 | 7.00 | 5.88 |
| 103-88 | 8x8 | 9.75 | 9.12 | 5.88 |
| *103-108 | 10x8 | 11.95 | 9.12 | 6.38 |
| 103-1010 | 10x10 | 11.95 | 11.12 | 6.12 |
| 103-1212 | 12x12 | 14.50 | 13.20 | 6.18 |
| 103-1516 | 15x16 | 18.25 | 17.40 | 6.75 |
| 103-1818 | 18x18 | 21.50 | 19.50 | 9.00 |
| 103-2424 | 24x24 | 28.50 | 25.80 | 8.12 |

104 Concrete to Concrete

| Part No. | Pipe Size | A | B | C |
|-----------|-----------|-------|-------|------|
| 104-44 | 4x4 | 5.62 | 5.62 | 4.00 |
| 104-64 | 6x4 | 7.80 | 5.62 | 6.00 |
| *104-64EC | 6x4 | 7.80 | 5.62 | 6.00 |
| 104-66 | 6x6 | 7.80 | 7.80 | 6.00 |
| 104-86 | 8x6 | 10.25 | 7.80 | 6.00 |
| 104-88 | 8x8 | 10.25 | 10.25 | 6.12 |
| 104-108 | 10x8 | 12.60 | 10.60 | 6.25 |
| 104-1010 | 10x10 | 12.75 | 12.75 | 6.25 |
| 104-1210 | 12x10 | 15.55 | 12.60 | 6.50 |
| 104-1212 | 12x12 | 15.55 | 15.55 | 7.00 |
| 104-1212L | 12x12 | 16.25 | 16.25 | 6.38 |
| 104-1515 | 15x15 | 19.50 | 19.50 | 9.00 |
| 104-1818 | 18x18 | 22.70 | 22.70 | 9.00 |
| 104-2121 | 21x21 | 26.50 | 26.50 | 9.00 |
| 104-2424 | 24x24 | 30.00 | 30.00 | 9.00 |
| 104-2727 | 27x27 | 34.50 | 34.50 | 9.00 |
| 104-3030 | 30x30 | 37.50 | 37.50 | 9.00 |

*Supplied with reducer
L=Larger OD

105 Concrete (A) to Clay (B)

| Part No. | Pipe Size | A | B | C |
|----------|-----------|-------|------|------|
| 105-44 | 4x4 | 5.62 | 5.30 | 4.00 |
| 105-64 | 6x4 | 7.80 | 5.30 | 6.00 |
| 105-66 | 6x6 | 7.80 | 7.50 | 6.00 |
| 105-86 | 8x6 | 10.25 | 7.80 | 6.00 |
| 105-88 | 8x8 | 10.25 | 9.75 | 6.00 |

106 Concrete (A) to Cast Iron or Plastic (B)

| Part No. | Pipe Size | A | B | C |
|-----------|-----------|-------|-------|------|
| *106-43 | 4x3 | 5.62 | 3.40 | 4.30 |
| 106-44 | 4x4 | 5.62 | 4.40 | 4.00 |
| *106-46 | 4x6 | 5.62 | 6.40 | 6.00 |
| *106-63 | 6x3 | 7.80 | 3.40 | 6.18 |
| 106-64 | 6x4 | 7.80 | 4.40 | 5.88 |
| *106-64EC | 6x4 | 7.80 | 4.40 | 6.00 |
| 106-66 | 6x6 | 7.80 | 6.40 | 5.88 |
| *106-68 | 6x8 | 7.80 | 8.55 | 5.75 |
| *106-84 | 8x4 | 10.25 | 4.40 | 6.00 |
| 106-86 | 8x6 | 10.25 | 6.40 | 5.75 |
| *106-86EC | 8x6 | 10.25 | 6.40 | 6.12 |
| 106-88 | 8x8 | 10.25 | 8.55 | 5.87 |
| 106-108 | 10x8 | 12.75 | 8.55 | 6.87 |
| 106-1010 | 10x10 | 12.75 | 10.60 | 6.62 |
| 106-1210 | 12x10 | 15.55 | 10.60 | 6.75 |
| 106-1212 | 12x12 | 15.55 | 12.60 | 6.50 |
| 106-1212L | 12x12 | 16.55 | 12.60 | 7.00 |
| *106-1512 | 15x12 | 19.50 | 12.60 | 9.00 |
| 106-1515 | 15x15 | 19.50 | 15.30 | 9.00 |
| 106-1818 | 18x18 | 22.70 | 18.70 | 8.62 |
| 106-2121 | 21x21 | 26.50 | 22.05 | 8.38 |
| 106-2424 | 24x24 | 30.00 | 24.80 | 8.12 |

*Supplied with reducer
L=Larger OD

151

Asbestos Cement or Ductile Iron (A) to Cast Iron or Plastic (B)

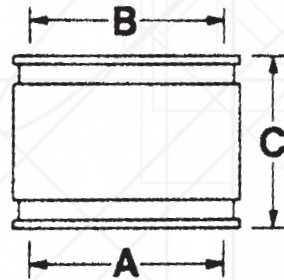
| Part No. | Pipe Size | A | B | C |
|-----------|-----------|-------|-------|------|
| *151-43 | 4x3 | 4.75 | 3.40 | 4.60 |
| 151-44 | 4x4 | 4.75 | 4.40 | 4.25 |
| *151-46 | 4x6 | 4.75 | 6.40 | 6.00 |
| 151-48 | 4x8 | 4.75 | 8.55 | 6.00 |
| *151-53 | 5x3 | 5.90 | 3.40 | 5.00 |
| 151-54 | 5x4 | 5.90 | 4.40 | 4.80 |
| 151-55 | 5x5 | 5.62 | 5.62 | 4.00 |
| 151-56 | 5x6 | 5.90 | 6.40 | 4.88 |
| *151-63 | 6x3 | 7.00 | 3.40 | 6.00 |
| 151-64 | 6x4 | 7.00 | 4.40 | 5.70 |
| *151-64EC | 6x4 | 7.00 | 4.40 | 6.00 |
| 151-65 | 6x5 | 7.00 | 5.50 | 5.80 |
| 151-66 | 6x6 | 7.00 | 6.40 | 6.00 |
| *151-68 | 6x8 | 7.00 | 8.55 | 6.70 |
| *151-84 | 8x4 | 9.12 | 4.40 | 6.00 |
| 151-86 | 8x6 | 9.12 | 6.40 | 6.00 |
| 151-88 | 8x8 | 9.12 | 8.55 | 6.00 |
| 151-810 | 8x10 | 9.12 | 10.60 | 6.38 |
| *151-812 | 8x12 | 9.12 | 12.60 | 6.25 |
| *151-108 | 10x8 | 11.12 | 8.55 | 6.37 |
| 151-1010 | 10x10 | 11.12 | 10.60 | 6.12 |
| 151-1210 | 12x10 | 13.00 | 10.60 | 6.62 |
| 151-1212 | 12x12 | 13.20 | 12.60 | 6.25 |
| 151-1215 | 12x15 | 13.20 | 15.30 | 6.50 |
| 151-1615 | 16x15 | 17.40 | 15.30 | 7.00 |
| 151-1818 | 18x18 | 19.25 | 19.25 | 9.00 |
| 151-2021 | 20x21 | 22.05 | 22.05 | 9.00 |
| 151-2424 | 24x24 | 25.50 | 25.50 | 9.00 |

*Supplied with reducer
EC = Eccentric

155

Asbestos Cement or Ductile Iron to Asbestos Cement or Ductile Iron

| Part No. | Pipe Size | A | B | C |
|----------|-----------|-------|-------|------|
| 155-44 | 4x4 | 4.75 | 4.75 | 4.20 |
| 155-55 | 5x5 | 5.62 | 5.62 | 4.00 |
| 155-64 | 6x4 | 7.00 | 4.75 | 6.00 |
| 155-66 | 6x6 | 7.00 | 7.00 | 6.00 |
| 155-86 | 8x6 | 9.12 | 7.00 | 5.80 |
| 155-88 | 8x8 | 9.12 | 9.12 | 6.00 |
| 155-1010 | 10x10 | 11.12 | 11.12 | 6.50 |
| 155-1212 | 12x12 | 13.20 | 13.20 | 6.30 |
| 155-1414 | 14x14 | 15.30 | 15.30 | 9.00 |
| 155-1616 | 16x16 | 17.40 | 17.40 | 9.00 |
| 155-1818 | 18x18 | 19.50 | 19.50 | 9.00 |
| 155-2020 | 20x20 | 21.60 | 21.60 | 9.00 |
| 155-2424 | 24x24 | 25.80 | 25.80 | 9.00 |



156

Cast Iron or Plastic to Cast Iron or Plastic

| Part No. | Pipe Size | A | B | C |
|-----------|-----------|------|------|------|
| 156-125 | 1½x1¼ | 1.66 | 1.66 | 3.50 |
| 156-15125 | 1½x1¼ | 1.90 | 1.66 | 3.50 |
| 156-15 | 1½x1½ | 1.90 | 1.90 | 3.50 |
| 156-215 | 2x1½ | 2.40 | 1.90 | 3.50 |
| 156-22 | 2x2 | 2.40 | 2.40 | 3.50 |
| *156-31 | 3x1 | 3.40 | 1.31 | 4.00 |
| *156-315 | 3x1½ | 3.40 | 1.90 | 4.18 |
| 156-32 | 3x2 | 3.40 | 2.40 | 4.00 |
| 156-33 | 3x3 | 3.40 | 3.40 | 4.25 |
| *156-4125 | 4x1¼ | 4.40 | 1.66 | 4.00 |
| *156-415 | 4x1½ | 4.40 | 1.90 | 4.18 |
| 156-42 | 4x2 | 4.40 | 2.40 | 4.00 |
| 156-42EC | 4x2 | 4.40 | 2.40 | 4.00 |
| 156-43 | 4x3 | 4.40 | 3.40 | 4.00 |
| 156-43EC | 4x3 | 4.40 | 3.45 | 4.00 |
| 156-44 | 4x4 | 4.50 | 4.50 | 4.25 |
| 156-44S | 4x4 | 4.40 | 4.40 | 4.25 |
| *156-53 | 5x3 | 5.50 | 3.40 | 4.30 |
| 156-54 | 5x4 | 5.50 | 4.40 | 4.00 |
| 156-55 | 5x5 | 5.62 | 5.62 | 4.00 |
| *156-62 | 6x2 | 6.45 | 2.40 | 5.25 |
| 156-63 | 6x3 | 6.40 | 3.40 | 6.00 |
| 156-64 | 6x4 | 6.40 | 4.40 | 5.63 |
| 156-64L | 6x4 | 6.45 | 4.50 | 5.63 |
| 156-64EC | 6x4 | 6.45 | 4.50 | 6.00 |
| 156-65 | 6x5 | 6.40 | 5.50 | 4.75 |
| 156-66 | 6x6 | 6.40 | 6.40 | 6.00 |

*Supplied with reducer
S=Smaller OD
EC = Eccentric

156

Cast Iron or Plastic to Cast Iron or Plastic

| Part No. | Pipe Size | A | B | C |
|------------|-----------|-------|-------|------|
| *156-84 | 8x4 | 8.55 | 4.40 | 6.00 |
| 156-86 | 8x6 | 8.55 | 6.40 | 5.88 |
| *156-86EC | 8x6 | 8.55 | 6.40 | 6.00 |
| 156-88 | 8x8 | 8.55 | 8.55 | 5.75 |
| *156-104 | 10x4 | 10.60 | 4.40 | 6.63 |
| *156-106 | 10x6 | 10.60 | 6.40 | 6.63 |
| 156-108 | 10x8 | 10.60 | 8.55 | 6.38 |
| *156-108EC | 10x8 | 10.60 | 8.55 | 5.88 |
| 156-1010 | 10x10 | 10.60 | 10.60 | 5.88 |
| *156-126 | 12x6 | 12.60 | 6.40 | 6.25 |
| *156-128 | 12x8 | 12.60 | 8.55 | 6.50 |
| 156-1210 | 12x10 | 12.60 | 10.60 | 6.25 |
| 156-1212 | 12x12 | 12.60 | 12.60 | 6.38 |
| 156-1414 | 14x14 | 14.00 | 14.00 | 6.25 |
| 156-1510 | 15x10 | 15.30 | 10.60 | 6.75 |
| 156-1512 | 15x12 | 15.30 | 12.60 | 6.50 |
| 156-1515 | 15x15 | 15.30 | 15.30 | 6.75 |
| 156-1616 | 16x16 | 16.00 | 16.00 | 6.31 |
| 156-1815 | 18x15 | 18.10 | 15.02 | 7.00 |
| 156-1818 | 18x18 | 18.70 | 18.70 | 8.00 |
| 156-2121 | 21x21 | 22.05 | 22.05 | 9.00 |
| 156-2421 | 24x21 | 25.25 | 22.05 | 8.38 |
| 156-2424 | 24x24 | 24.80 | 24.80 | 9.00 |
| 156-2724 | 27x24 | 28.50 | 24.80 | 8.12 |
| 156-2727 | 27x27 | 27.95 | 27.95 | 9.00 |
| 156-3027 | 30x27 | 32.50 | 28.00 | 8.50 |
| 156-3030 | 30x30 | 32.00 | 32.00 | 9.00 |

*Supplied with reducer
S=Smaller OD
EC = Eccentric



156 Series adapts to these outside pipe diameters:

| Material | 1¼" | 1½" | 2" | 3" | 4" |
|----------------|-------|-------|-------|-------|-------|
| CAST IRON | | | | | |
| Extra Heavy | -- | -- | 2.38 | 3.50 | 4.50 |
| Service Weight | -- | -- | 2.30 | 3.38 | 4.30 |
| No Hub | -- | 1.90 | 2.31 | 3.31 | 4.38 |
| ABS/PVC | | | | | |
| DWV Sch. 40 | 1.660 | 1.900 | 2.375 | 3.500 | 4.500 |
| PLASTIC | | | | | |
| Sewer & Drain | -- | -- | -- | 3.250 | 4.215 |
| COPPER | 1.375 | 1.625 | 2.125 | 3.125 | 4.125 |
| STEEL | 1.660 | 1.900 | 2.375 | 3.500 | 4.500 |
| LEAD | 1.528 | 1.830 | 2.354 | 3.250 | 4.250 |

156 Series fits all of these drain pipe materials:

- Cast Iron Soil Pipe
 - Extra Heavy (XH)
 - Service Weight (SW)
 - No Hub (NH)
- Steel Pipe, Schedule 40, Copper Pipe, Lead Pipe, Plastic Pipe
 - ABS/PVC, DWV (Schedule 40)
 - ABS/PVC, Schedule 30 (Thin Wall)
 - ABS/PVC, Styrene, sewer and drain ASTM D2729
 - PVC Sewer and drain ASTM D3034 and SDR35