



Indiana Seal Flexible Coupling Installation



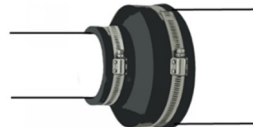
1. Loosen the stainless steel clamps. Do not remove clamps from the coupling.

- The straps must be "ADEQUATELY" loosened to allow the flexible material to move outward while the piping is being inserted into the socket. The straps will be snugged tight at the factory to prevent dislodging during transportation and handling.



2. Slide coupling over one pipe end. Insert second pipe. Center pipe ends inside of coupling.

- Clean the ends of the pipe prior to attaching coupling.
- A small chamfer or bevel may be required where a tight fit occurs.
- Piping materials are manufactured to a nominal outside diameter that allows for a plus or minus industry tolerance. Piping manufactured to the high end of tolerance may cause a higher assembly force.
- Colder temperatures may harden the coupling, requiring increased forces to assemble the coupling and pipe.
- Verify the pipe you are connecting to by measuring the OD or description. The same color may be used on multiple outside pipe diameters.



3. Tighten clamps to 60 inch-lbs. of torque.



4. Pressure test before backfilling or concealing joint. Bed and backfill properly.

- Maximum test pressure 4.3 psi

