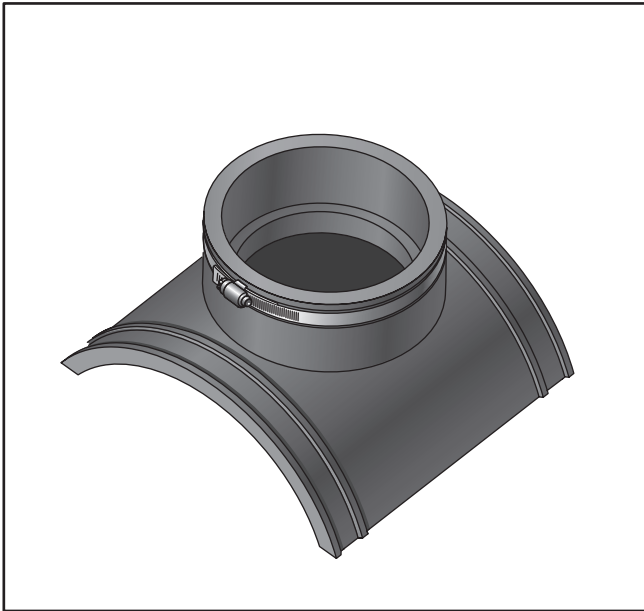
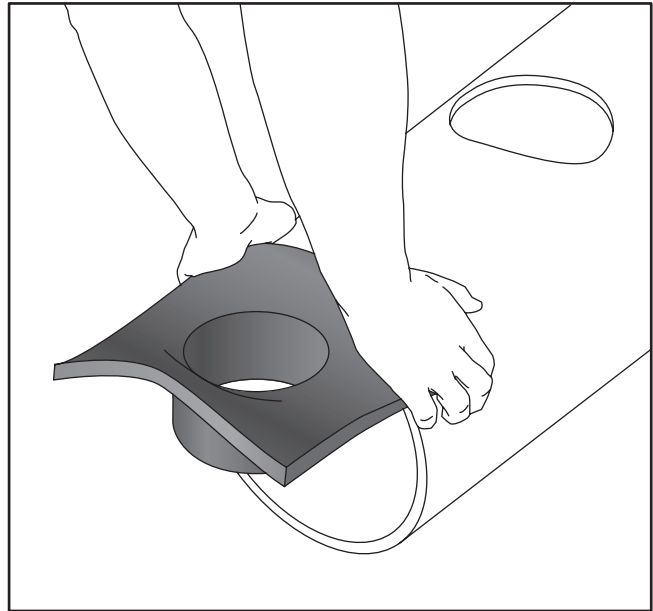


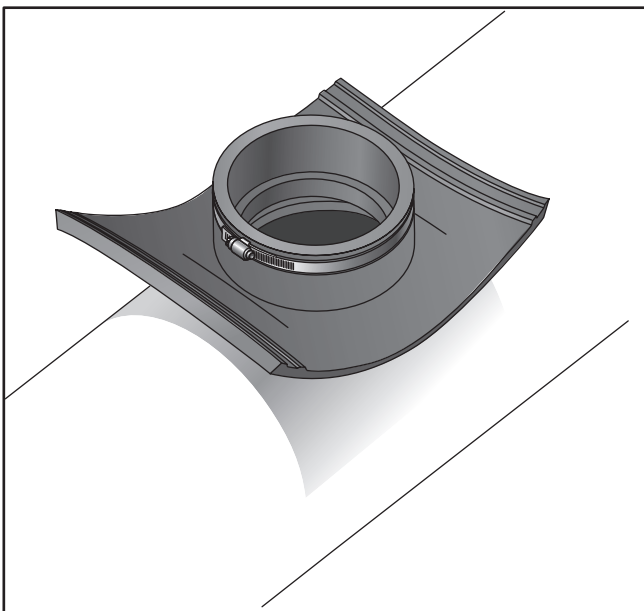
# NDS FLEXIBLE SADDLES



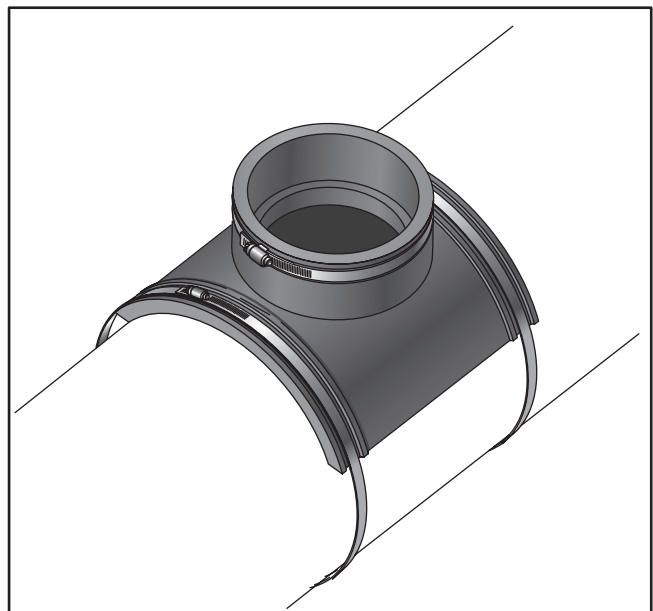
STEP 1: Standard saddle



STEP 2: Invert saddle and press down against the curvature of the pipe to obtain the correct deflection of the skirt as illustrated.



STEP 3: Locate the saddle with the deflected skirt over the tap hole.



STEP 4: Tighten clamps to a minimum of 60 inch-Lbs torque (5ft-Lbs torque). Bed and backfill according to engineer's specifications.